

jupiter  | Vaporization Hardware

+1 (480) 867-6100
2023 Product Catalog
©2023 Jupiter Research LLC
All Rights Reserved



[JUPITERRESEARCH.COM](https://jupiterresearch.com)

jupiter 

There is
nothing like
the original.



Our Story

Founded in 2015, Jupiter Research set out to create the world's first reliable, high performing, and easy to use cannabis vape cartridge. The result was the very first cartridge to use CCELL® heating technology, which has become the industry standard that brands and consumers have grown to know and love to this day.

Today, Jupiter's product line has expanded to offer CCELL® technology in a variety of 510-thread cartridges, all-in-one devices, and pod systems, offering brands and consumers reliability and performance in every form factor imaginable.

While there are a lot of vaporizer products out there, there is only one original, and only one true CCELL®.

Powered by **CCELL®**

Setting the standard others follow.

Since the beginning, CCELL® has always made safety the number one priority. By utilizing advanced technology in their state-of-the-art labs, their products consistently pass all safety and stability tests, bringing safer options to the vaping community.

Not only is the hardware top-of-the-line, CCELL® also became the leaders for consistently having a <1% failure rate. This internal goal became an expected requirement from clients, resulting in other companies following suit.



Image Courtesy of CCELL®



Image Courtesy of CCELL®

[®]
CCELL

A close up of the ceramic pores that make up the heating element within the cartridge.

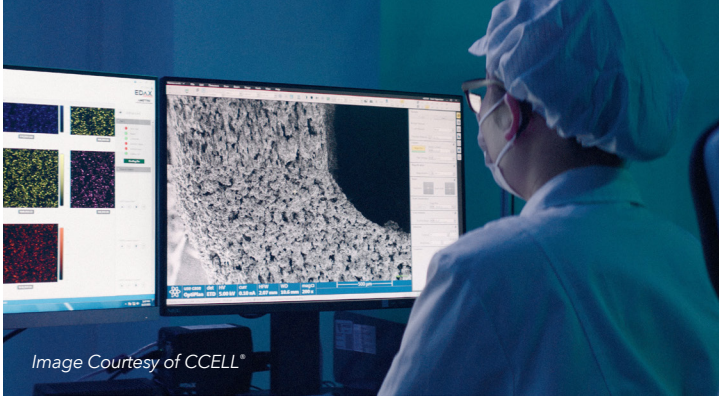


Image Courtesy of CCELL®

Testing the thermal output and heat distribution of the heating element within the cartridge.

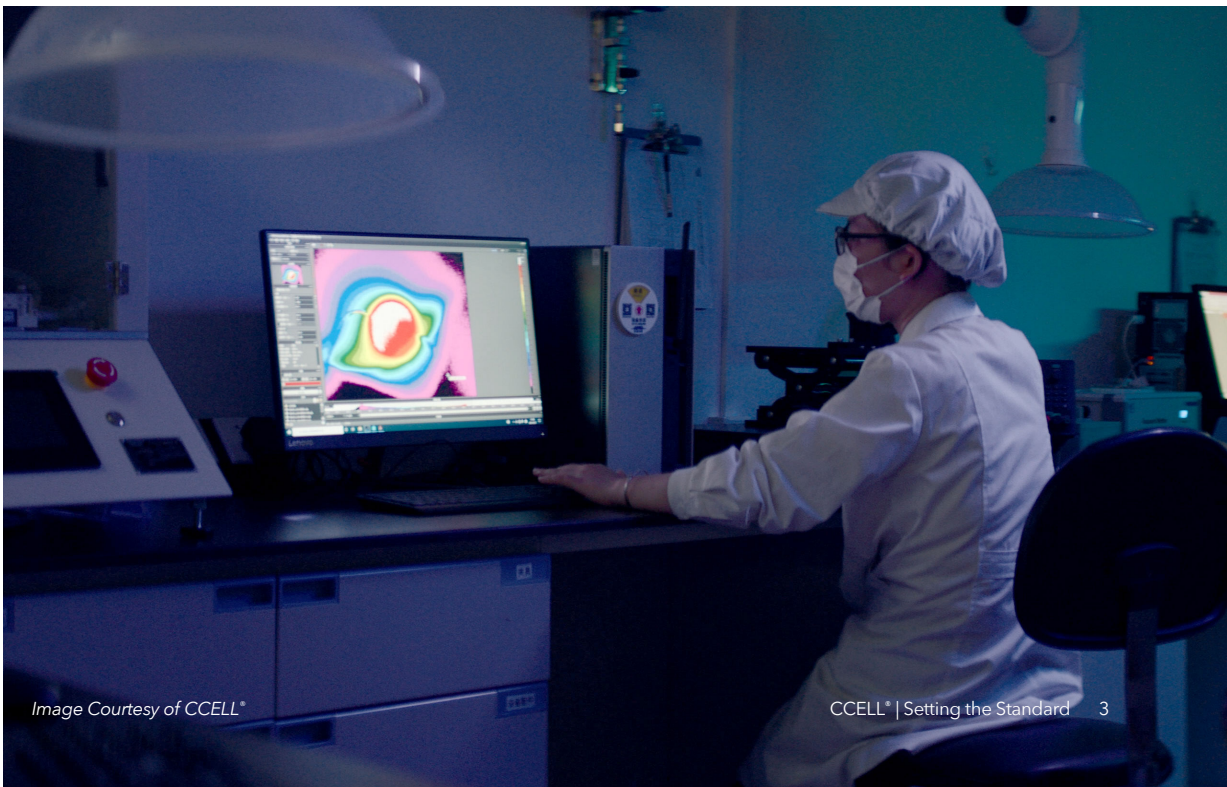


Image Courtesy of CCELL®

CCELL® continues to invest in research and development striving to enhance its product's safety and deliver an elite vaping experience to the end user.

Hardware shouldn't be hard.

High performance and reliability doesn't have to stop at the hardware and at Jupiter, we carry these traits throughout our business.

Since our very first cartridge was shipped, Jupiter has taken CCELL® products around the globe, partnering with over 1,000 customers to bring their vaporization brands to life by ensuring their consumers have the best possible experience with their products. Our goal is to offer best in class service by taking the complexities out of sourcing and deciding on hardware.

- ▲ Dedicated Sales & Customer Support Team
- ▲ Freight & Logistics Solutions
- ▲ Warehousing & Storage Options (US + Canada)
- ▲ On-site Engineering & Quality Support
- ▲ In-house Production Design / Branding Team
- ▲ Factory-based Quality Control Team



Jupiter is CCELL®'s leading distributor and we continue to innovate premium products for the Americas, Canada, Europe, Asia, and overall industry.



We knew we could be even better.

Introducing CCELL® EVO

But the question was how?

So, we started by looking inward... at the atomizer. CCELL® began constructing a new ceramic coil that is designed with consistently sized pores for even heat distribution.

These elevated updates resulted in better thermal output leading to improved performance, consistent taste, bigger clouds, and less clogging and leaking.

L6 ETP EVO (CCELL® M6T)

- ▲ 0.5mL & 1.0mL
- ▲ Press-fit & Snap-fit available
- ▲ Variety of mouthpieces available



L6 Glass EVO (CCELL® TH2)

- ▲ 0.5mL & 1.0mL
- ▲ Twist-on & Snap-fit available
- ▲ Variety of mouthpieces available

Large and in charge.

RA100 takes 510 thread cartridges to the next level with an increased diameter, larger airway, and a heavy hitting CCELL® core. Differentiate your brand in a big way and ensure your customers get the best experience with your product.

While we recommend matching the RA100 power supply with variable voltage for the full experience, you can still pair it with any of our classic L6 stick batteries.

RA100 (Specifications)

- ▲ 0.5mL, 1.0mL, 1.2mL & 2.0mL
- ▲ Press-fit mouthpiece
- ▲ Variety of mouthpieces available

RA100

The RA100 has expanded air flow giving you a cooler, lighter, tastier vaping experience.

The battery of the RA100 is 650mAh and has variable temperature settings (L,M,H) making it for the more experienced user.



Klean (0.5mL, 1.0mL)

Meet our new, high-terpene content compatible cartridge, Klean. Unique in appearance, this cartridge is a true testament to our dedication to preserve the authentic flavors found in cannabis.

Designed with a sleek and modern metal sleeve, Klean protects your oil from deterioration caused by exposure to sunlight, while also providing discretion and privacy for those who want to fly under the radar.



Kera (0.5mL, 1.0mL)

Our all-ceramic Kera cartridge guarantees pure flavors while eliminating any corrosion and chemical by-products during the heating process.

The result? The ultimate vaping experience with the purest flavors, safest experience and most comfortable mouth feel.



THREDZ™

Stackable 510 Cartridge System

Thredz™ is the first and only patented stackable cartridge system that allows you to blend two oil cartridges creating the perfect fusion of flavor and a customized experience.

Compatible with most 510 cartridges and batteries on the market, Thredz™ is an innovative, convenient, and cost-effective blending solution for both brands and consumers.



Thredz™ (0.5mL)

510 Thread Connector Mouthpiece

0.5mL Reservoir Capacity

CCELL® EVO Technology





More oil. Longer Sessions.

Large Capacity AIO's

We've noticed it's specifically the large capacity AIO's that are trending, and it makes total sense. More oil, longer sessions, fewer dispensary visits, happier people.

It turns out that people do, in fact, want the smoke. So that's what we're giving you, in many shapes and sizes. Whatever you want, you can get.

Did we mention that most are USB-C rechargeable?
There's that too.



AIO's are the new black.

Small Capacity AIO's

Simply put, AIO's are trending, and trending for good reason... Not only are they convenient for the one-stop shopper, they're also good for travelers.

Did you fly to Vegas for the weekend? Don't stress about sneaking that lithium battery and cartridge onto the plane, just pick up an all-in-one when you get there.

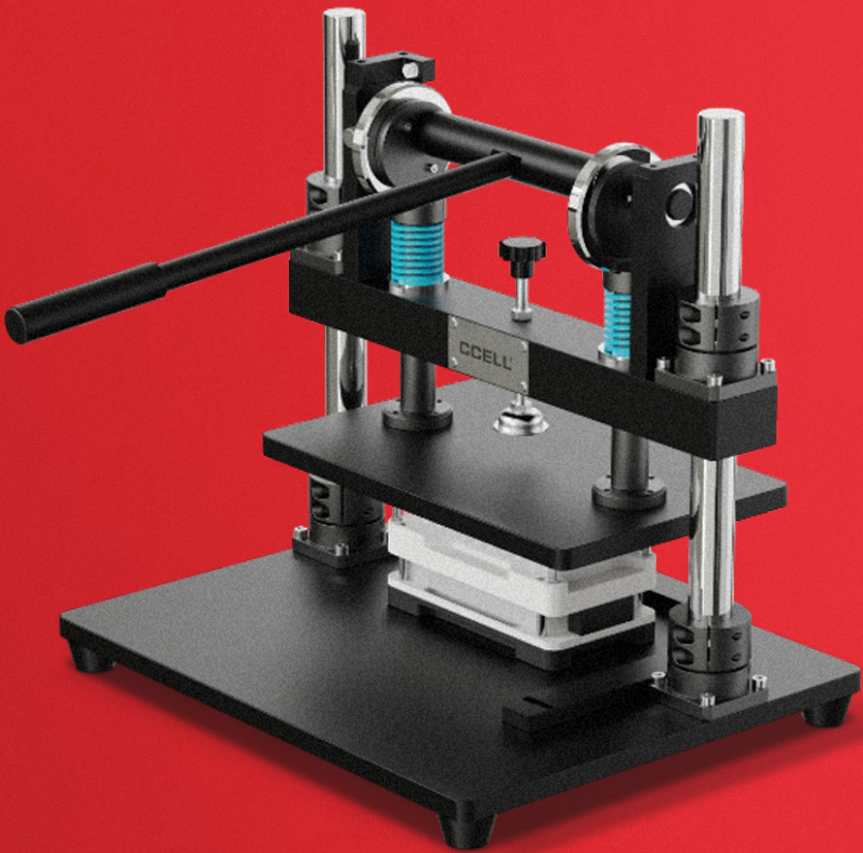


CCELL® Snap-fit & Arbor Press

Batch Capping System

Our most popular CCELL® products are now available with low press-force snap-fit mouthpieces and compatible with the new CCELL® Arbor Press. This new setup makes filling and capping CCELL® cartridges and all-in-ones easier and more efficient than ever before. That means less labor, more consistency, and increased throughput.

Also available are pre-packed foam trays designed to be compatible with most leading filling equipment so that you can go straight from filling, to capping, to packaging with ease.



All-in-one Capping Solution

Loaded Fixture & Arbor Press



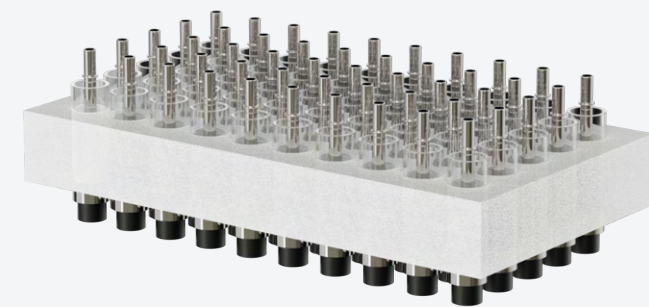
Pre-Racked Foam Trays

Snap-fit Devices / Cartridges

Mouthpiece Tray



Device/Cartridge Tray



Snap-fit devices/cartridges and their mouthpieces will ship to you conveniently packed in 5x10 foam trays for ease of filling & capping.

Batch Capping Fixtures

50 Units at a Time (5x10 Trays)

- 1 Gland Plate
Applies even pressure.
- 2 Deflector
Aligns mouthpieces.
- 3 Positioning Plate
Aligns devices/cartridges.
- 4 Baseboard
Aligns devices/cartridges for capping.



An Instant Connection

Our pod devices give you the perfect platform to fine tune your customers vaping experience.

Knowing which battery is powering what pod is extremely beneficial when it comes to your oil formulation. Customizing the pod to best suit your brand gives your customers a consistent and reliable vaping experience.



DartX
(480mAh | 0.5mL, 1.0mL)



Uno
(370mAh | 0.5mL, 1.0mL)



Luster
(350mAh | 0.5mL, 1.0mL)



Que
(330mAh | 0.5mL, 1.0mL)



Bellos
(320mAh | 0.5mL, 1.0mL)



A safe bet, and a good call.

510 Thread Batteries

510 thread vaporizers are considered to be the most universal form factor of vaporization devices.

When Jupiter's Liquid™ 6 batteries are calibrated with the Liquid™ 6 cartridges, the power is truly unmatched.

Our devices are engineered to deliver a discreet vaping experience without compromising flavor and efficacy, making these ultra-portable design styles a brand and fan favorite.

Palm (500mAh)

Our first 510 thread magnetic device, you are able to simply drop in a cartridge and start vaping. Palm's unique form factor allows for a larger battery, keeping you away from the outlets.

Silo (500mAh)

With a full charge, Silo's 500mAh battery is able to consistently deliver full volume vapor from start to finish.

L6 Standard (340mAh)

Our original and most recognizable 510 battery, the L6 Standard is the easiest and most convenient. Inhale activated, optimum temperature setting, and no-button design make the L6 Standard user-friendly for all.

L6 Compact (190mAh)

The same "stick battery" you know and love, only smaller and more compact. Roughly the size of a 1.0mL cartridge, this battery is about as discreet as you can get.

L6 V (M3B) (350mAh)

Three power settings to customize vapor feel without compromising discreet consumption. Secure from accidental activation with device lock. Liquid6™ V is simple to use for new and experienced consumers alike.





Go Stik
(280mAh)

L6 Plus
(350mAh)

Sandwave
(400mAh)

Palm Pro
(500mAh)

Rizo
(300mAh)

Fast-charging batteries to keep you out and about.

510 Thread Batteries (USB-C)

USB-C charging has become the norm with its powerful, fast-charging capabilities.

CCELL® has begun making the switch for their batteries starting with the Rizo and Sandwave batteries. The dreaded blinking battery light just got easier to handle.

Palm Pro (500mAh)

Experience the convenience and versatility of the Palm Pro. This device is equipped with a preheat function, adjustable voltage settings, battery status indicators, and a customizable airflow slider. Tailor your vaping experience to your liking.

Go Stik (280mAh)

A budget friendly battery that comes in an array of eye-catching colors, the Go Stik features a dual temperature slide switch, USB-C charging, and an anti-slip design preventing it from falling to those hard-to-reach places.

L6 Plus (350mAh)

A simpler solution for those who like to switch it up between flavor and potency. With it's easy dual switch, personalize your experience with two different heat options that allow you to find your perfect hit.

Rizo (300mAh)

A sleek and user-friendly battery with its 3-bar LED indicator for battery status and activation. The Rizo comes housed in a full-metallic casing featuring a slide switch for temperature, as well as haptic feedback for a tactile vaping experience.

Sandwave (400mAh)

Housed in a soft-touch shell, the Sandwave allows for temperature control with three-variable voltage settings (L, M, H) making it easy for you to control your vaping experience. Just remember, low temp high flavor, high temp, more vapor.



Palm Pro (500mAh)

Let the people decide.

Klik Dispenser

All of that excess distillate that you don't know what to do with; let the people decide.

Give your customers complete control with the precise dosing of the Klik dispenser. It is a great way for you to offload that extra product. And from a consumers standpoint, they're a fun way to medicate anything and everything, within reason of course.

- Klik** *(Specifications)*
- ▲ Precise dosing you can hear (0.03mL/0.05mL)
 - ▲ Volumes: 1.0mL & 1.5mL
 - ▲ Oil Viscosities: ≤500,000cP
 - ▲ Twist dial for ease of dispensing
 - ▲ Draw-back dial to stop flow
 - ▲ Patented zero volume plunger
 - ▲ Full customization / Private labeling



Klik

Any Oil, Any Way

Klik offers a wide range of possibilities for patients and customers to get creative with their consumption. With its precise dosing system, Klik allows for accurate and consistent measurement, making it easy to infuse cannabis into a variety of products.



We make you look good.

Our specialty is making sure your brand outshines the rest. Jupiter's in-house design team works with your concepts to build you the perfect custom branded cartridges and power supplies.

Are you into simple and clean designs? We've got you covered. Prefer to stand out with something loud? We've got ideas! Let us bring your imagination and creativity to reality.



Solutions beyond our hardware.

We understand it takes more than great hardware to have a truly successful brand.

Blister Shell

Our most cost-effective packaging solution, the blister shell, can be vacuum formed to most of our cartridges, batteries, and all-in-ones.

Small Sleeve

A more appealing and refined solution that can be custom cut with a window of your design. The sleeve packaging gives you more printing area in case you are wanting extra touch points, or if you have heavy compliance language.

Premium Sleeve

Our premium sleeve packaging option is capable of housing a wider range of cartridges, batteries, and all-in-ones making it an easy solution to house multiple products that you might have.

Child-Resistant Packaging

Developed by Denali Innovations, Kinder-Safe™ is a child-resistant packaging box featuring an injection-molded tray design that securely engages the sliding outer sleeve via a patented locking tabs system. These proprietary child-resistant technologies and CR certification meet the specific needs of the cannabis industry.

Blister Shell (Packaging)



Premium Sleeve (Packaging)



Small Sleeve (Packaging)



Child-Resistant (Packaging)



Safety is our first priority

Jupiter Research is proud to be a distributor and manufacturer of vaporization technology hardware that is manufactured in ISO and GMP compliant facilities.

We believe it's our responsibility to provide high performance state-of-the-art solutions, allowing you to focus on your craft and leave the hardware to us.

ISO Compliance

- ISO 9001:2015 - Standard for Quality Management Systems
- ISO 13485:2016 - Standard for Medical Device Quality Management Systems

cGMP Compliance

- SCIC-GMP-20220901-2, Is in Conformity with: FDA 21 CFR 110, Current Good Manufacturing Practice in Manufacturing, Packing, or Holding Human Food (cGMP), April 1, 2011.
- SCIC-GMP-20220901-3 Is in Conformity with: FDA 21 CFR 117 Current Good Manufacturing Practice, Hazard Analysis, Risk-Based Preventive Controls for Human Food, Sept. 17, 2015.
- SCIC-GMP-20220901-4 Is in Conformity with: FDA 21 CFR 820 Quality System (QS) Regulation/Medical Device Good Manufacturing Practices, April 1, 2018



Jupiter Research LLC.
ISO 13485:2016
10018383 MP2016





Get in touch with us!

**Our team is always
ready to help.**

Phone: +1 (480) 867-6100

Email: Info@JupiterResearch.com

Website: JupiterResearch.com

Hours: 8:30am – 5:30pm | Mon – Fri

